

# COUNTRY LIFE®

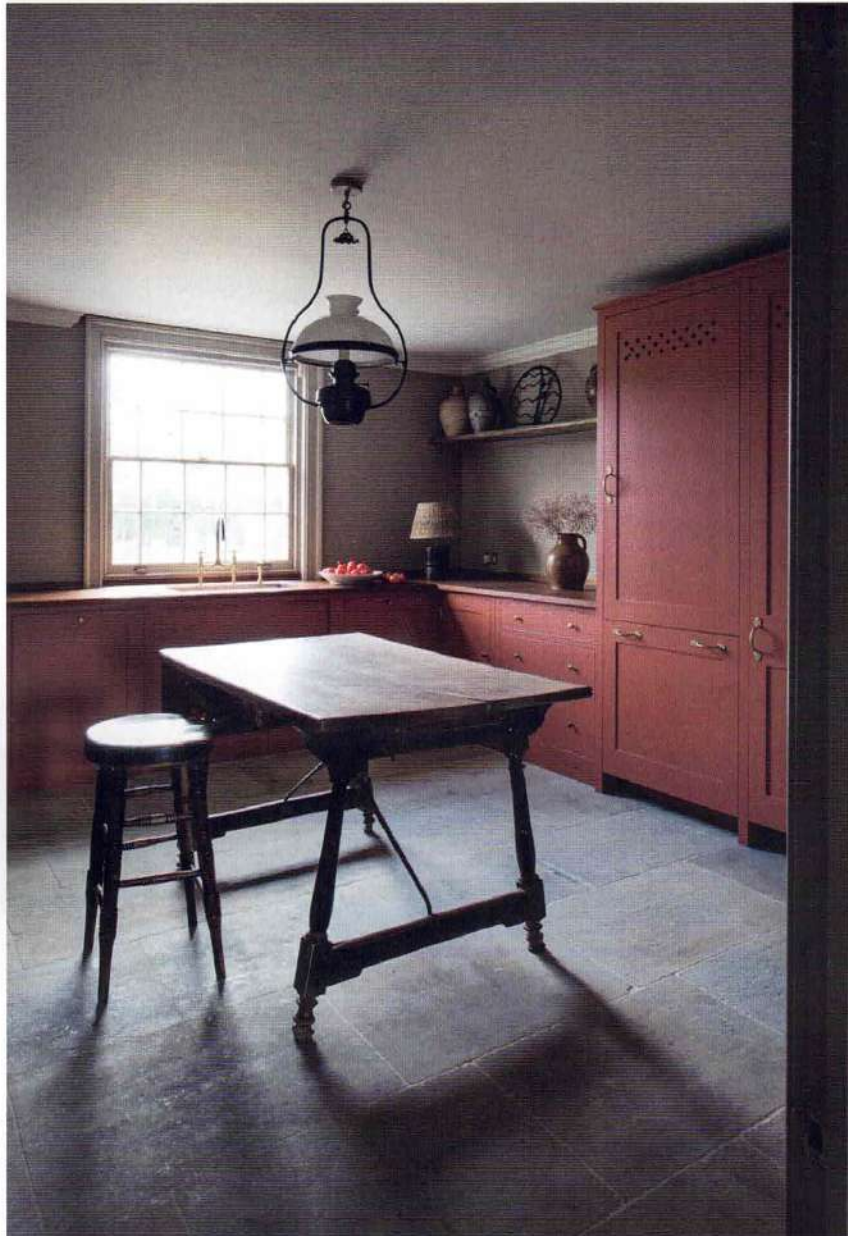
EVERY WEEK

MARCH 17, 2021

## Smaller country houses



The families who own whole villages  
Why wildlife is loving lockdown  
For one day only: when shamrock is lucky



## ▲ Below stairs

Interior designer and antique dealer Max Rollitt has collaborated with custom-cupboard maker Plain English to create this atmospheric pantry in a Georgian rectory. Designed as an extension to the main kitchen, it features Wilkes cupboards painted in Little Greene Tuscan Red, a 17th-century Spanish centre table and an antique wooden stool—and even a sink large enough to bathe the dog.

'As we now tend to live in our kitchens, we want them to be beautiful spaces, not filled with things that would be better put away elsewhere, so ancillary rooms, such as larders, boot rooms and utility rooms, are very useful for practical tasks and storage,' explains Mr Rollitt. 'Ancillary spaces need to be functional, but, given that we spend so much time in them, they also want some charm.'

Such charm comes from the inclusion of 'functional' antiques, such as tables and shelves. 'They've gained their richness and patina by being used over many years, so why not continue to use them?' He also likes to apply bolder colours to cabinetry. 'You do find brighter colours used in smaller rooms in historic houses, but in days before chemical dyes, they were mixed with more black and raw umber tones, which softened them,' advises Mr Rollitt, who likes to choose similarly 'friendly' shades for his projects today. Max Rollitt (01962 791124; [www.maxrollitt.com](http://www.maxrollitt.com)) Plain English kitchens start from £50,000 (01449 774028; [www.plainenglishdesign.co.uk](http://www.plainenglishdesign.co.uk))